

# **REPORT NO. 818**

## **Appendix A3**

### **AVGAS**

### **Results**

## A3.1

**Aviation Gasoline (AVGAS) - Monthly Results**  
**July '12 to May '13**

Participants	Jul '12	Sep '12	Nov '12	Jan '13	Mar '13	May '13
BP Refinery (QLD) Bulwer Island Eng No. 1	107.5	*	104.8	104.9	105.6	105.7
BP Refinery (WA) Kwinana Eng No. 2	108.0	106.8	106.1	106.0	106.9	106.9
Independent Petroleum Laboratory (NZ) Eng No. 3	105.7	106.6	105.0	105.4	106.6	*
Intertek Testing Services (NSW) Clyde	108.2	107.2	105.4	106.0	106.4	106.2
<i>No. of Results:</i>	4	3	4	4	4	3
<i>Median:</i>	107.75	106.80	105.20	105.70	106.50	106.20
<i>Normalised IQR:</i>	0.74	0.22	0.65	0.76	0.49	0.71
<i>Uncertainty of the median:</i>	0.46	0.16	0.41	0.47	0.31	0.51
<i>Test Method Reproducibility Standard Deviation:</i>	0.72	0.72	0.72	0.72	0.72	0.72
<i>Robust CV:</i>	0.7%	0.7%	0.7%	0.7%	0.7%	0.7%
<i>Minimum:</i>	105.7	106.6	104.8	104.9	105.6	105.7
<i>Maximum:</i>	108.2	107.2	106.1	106.0	106.9	106.9
<i>Range:</i>	2.5	0.6	1.3	1.1	1.3	1.2

\* indicates no result submitted

**AVGAS - Z-scores**  
**July '12 to May '13**

Participants	Jul '12	Sep '12	Nov '12	Jan '13	Mar '13	May '13
BP Refinery (QLD) Bulwer Island Eng No. 1	-0.35	*	-0.55	-1.11	-1.25	-0.69
BP Refinery (WA) Kwinana Eng No. 2	0.35	0.00	1.25	0.42	0.55	0.97
Independent Petroleum Laboratory (NZ) Eng No. 3	-2.84	-0.28	-0.28	-0.42	0.14	*
Intertek Testing Services (NSW) Clyde	0.62	0.55	0.28	0.42	-0.14	0.00

\* indicates no result submitted

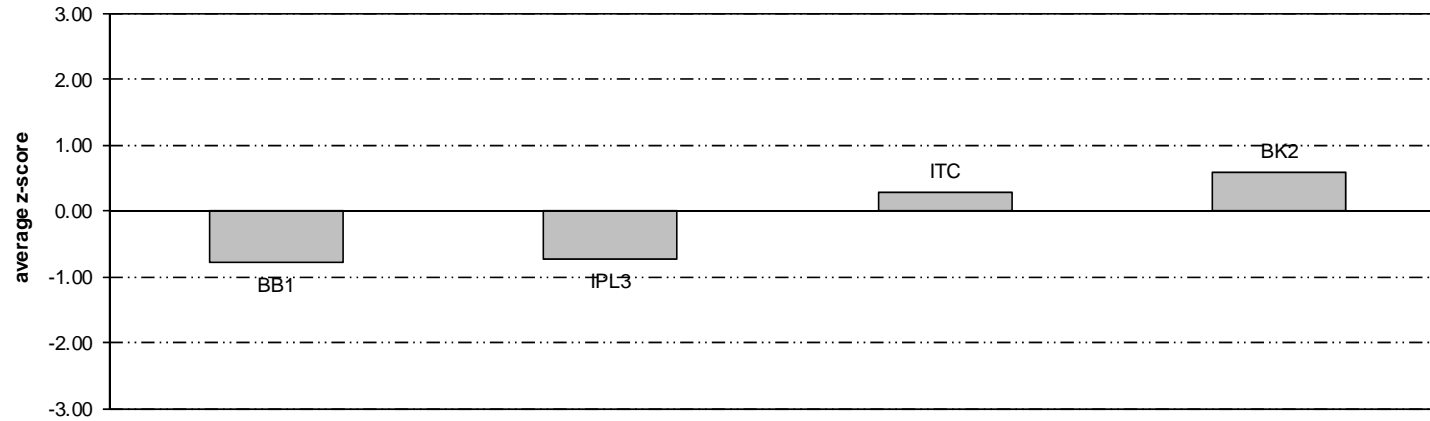
**AVGAS - BTSF Deviations from Specification**  
**July '12 to May '13**

Participants	Jul '12	Sep '12	Nov '12	Jan '13	Mar '13	May '13
BP Refinery (QLD) Bulwer Island Eng No. 1	*	*	*	*	0.0	*
BP Refinery (WA) Kwinana Eng No. 2	0.0	-0.1	0.1	0.0	0.0	-0.4
Independent Petroleum Laboratory (NZ) Eng No. 3	-0.6	0.0	0.1	0.0	0.0	*
Intertek Testing Services (NSW) Clyde	0.2	0.1	0.2	0.2	0.2	0.2

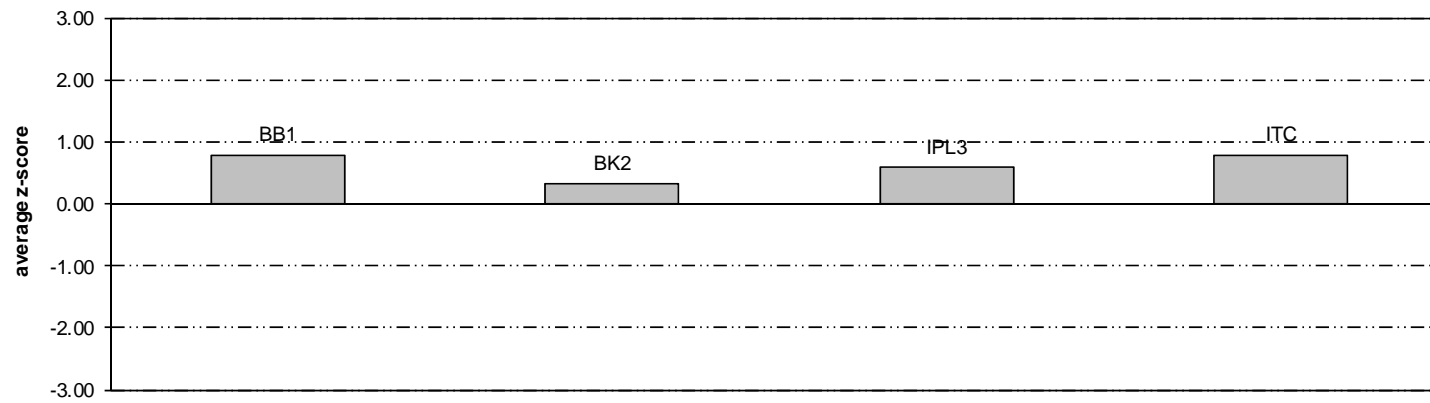
\* indicates no result submitted

"BTSF Deviation" = "Actual/Resultant BTSF value" - "BTSF Specification"

**AVGAS - Participant Average Z-scores**



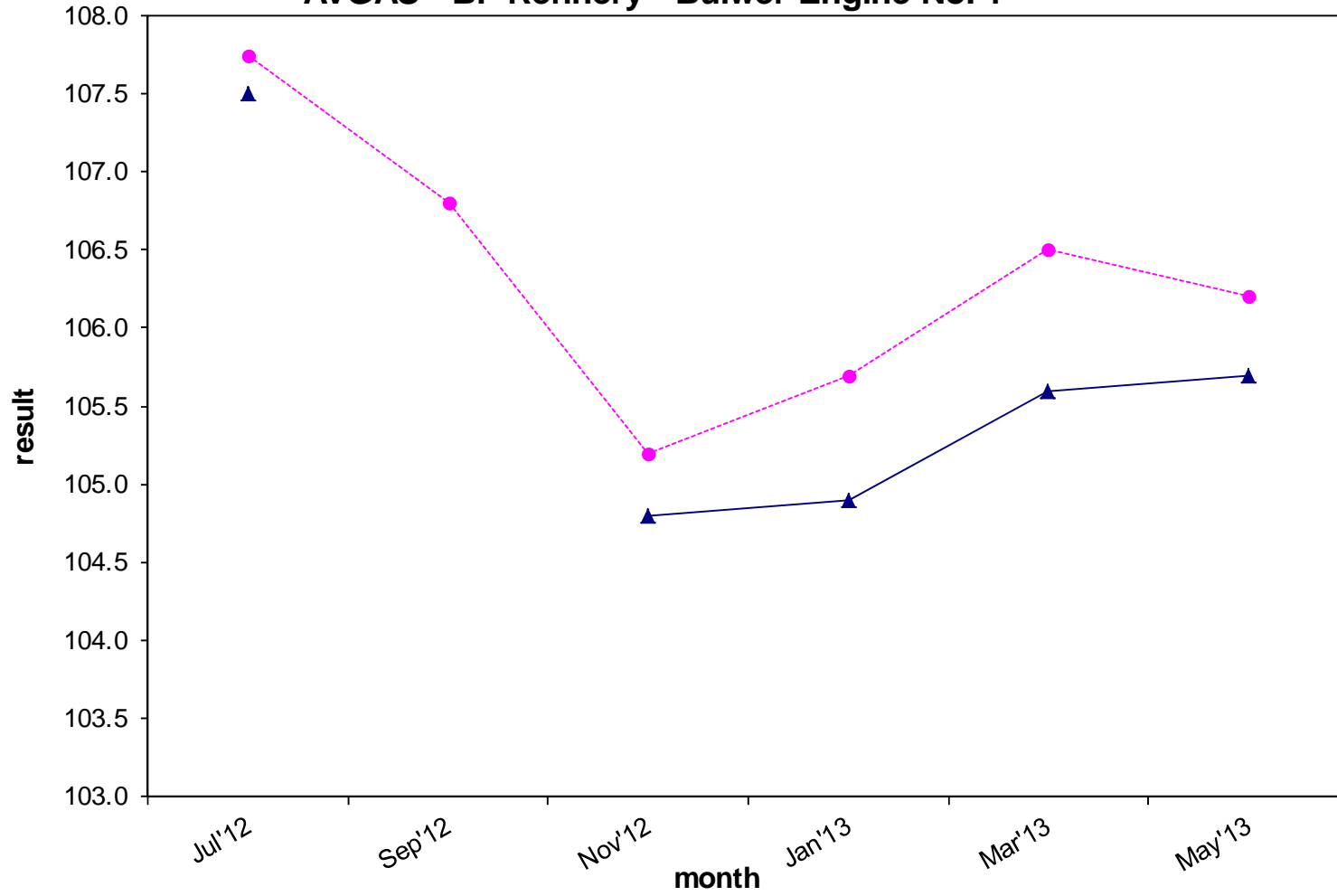
**AVGAS - Participant Average Absolute Z-scores**



A3.2

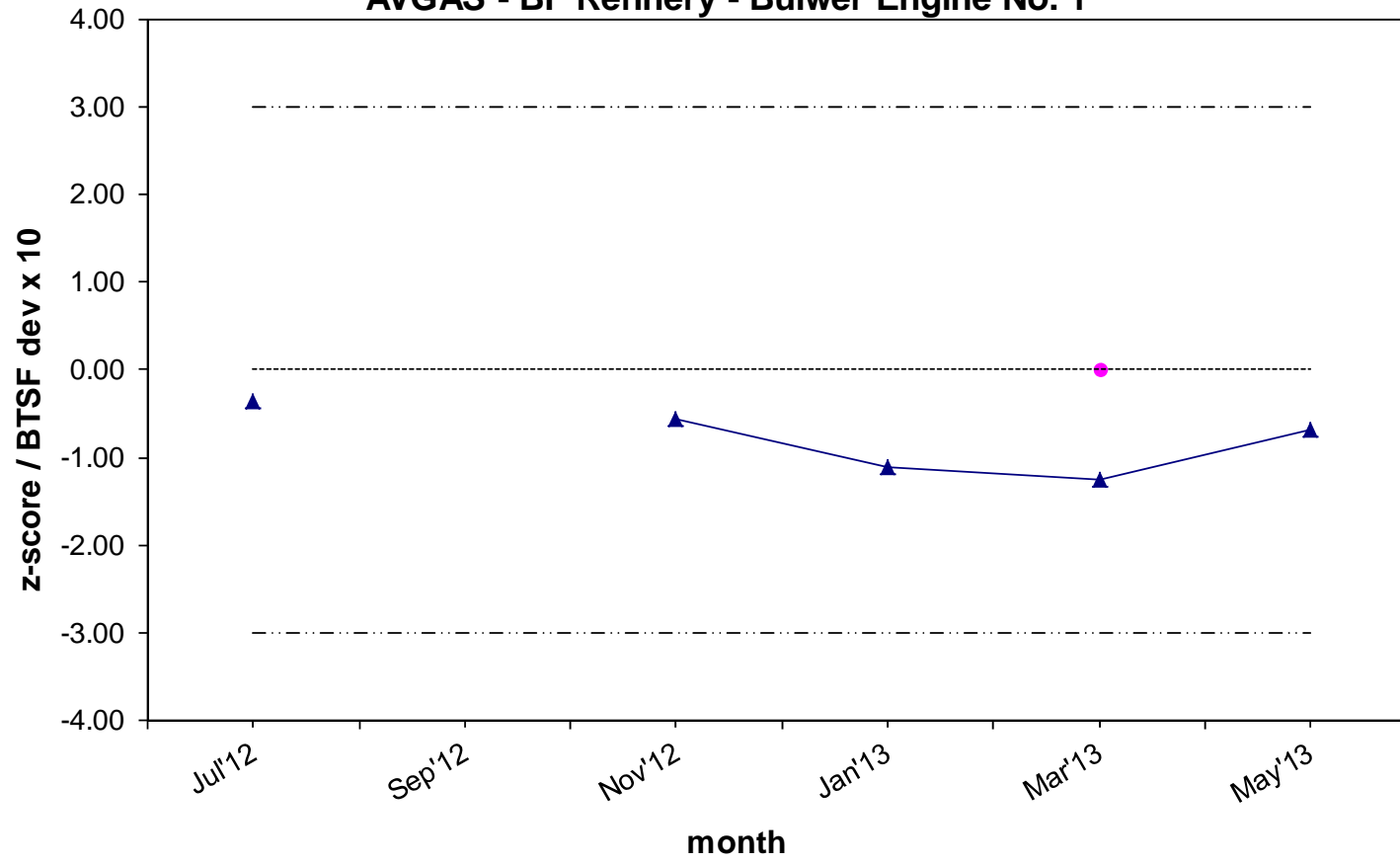
Average z-scores (top) and average absolute z-scores (bottom) shown for: BP - Bulwer Isl - No. 1 (BB1); BP - Kwinana - No. 2 (BK2); IPL - Whangarei - No. 3 (IPL3); Intertek - Clyde (ITC)

**AVGAS - BP Refinery - Bulwer Engine No. 1**



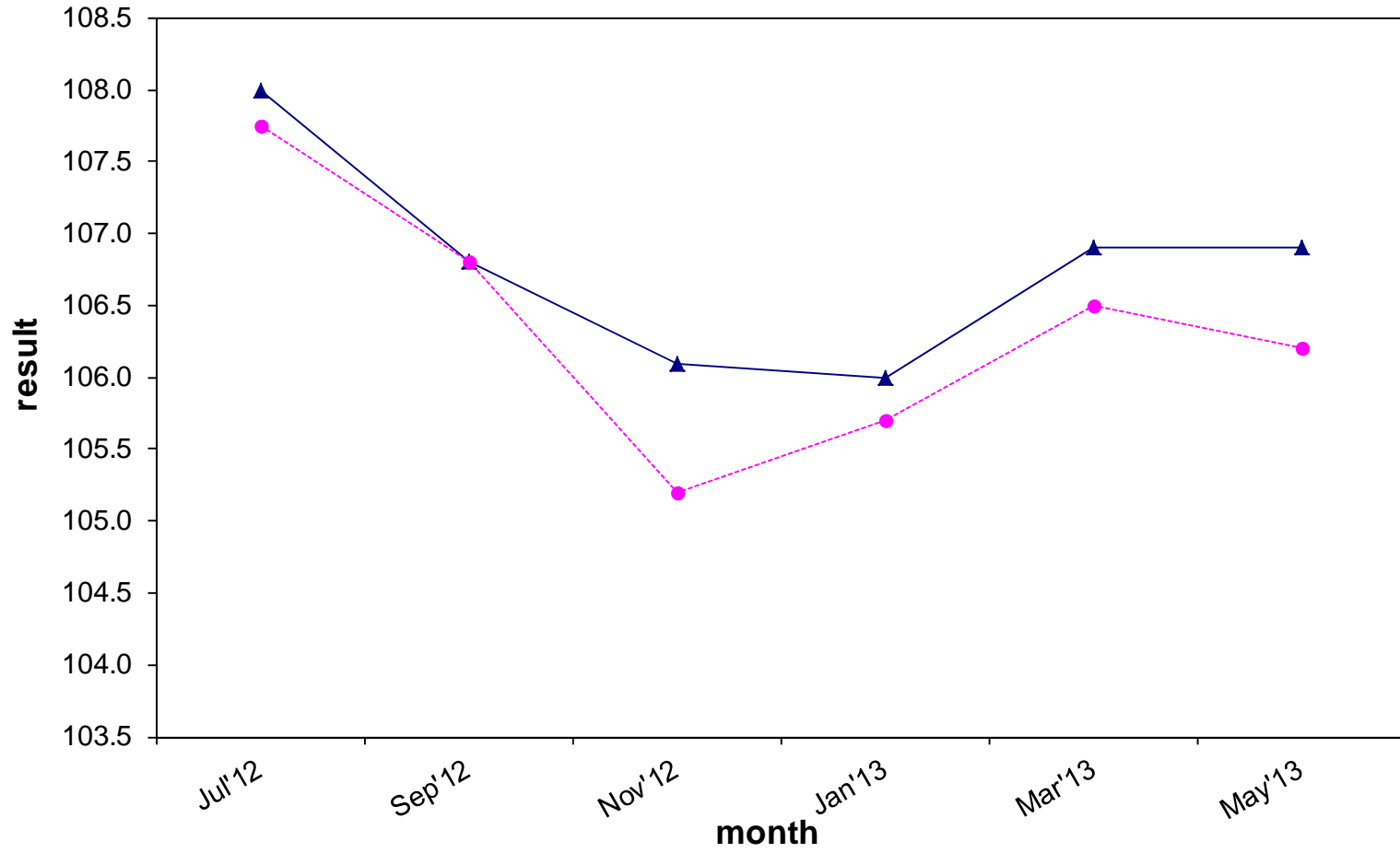
A3.3

### AVGAS - BP Refinery - Bulwer Engine No. 1



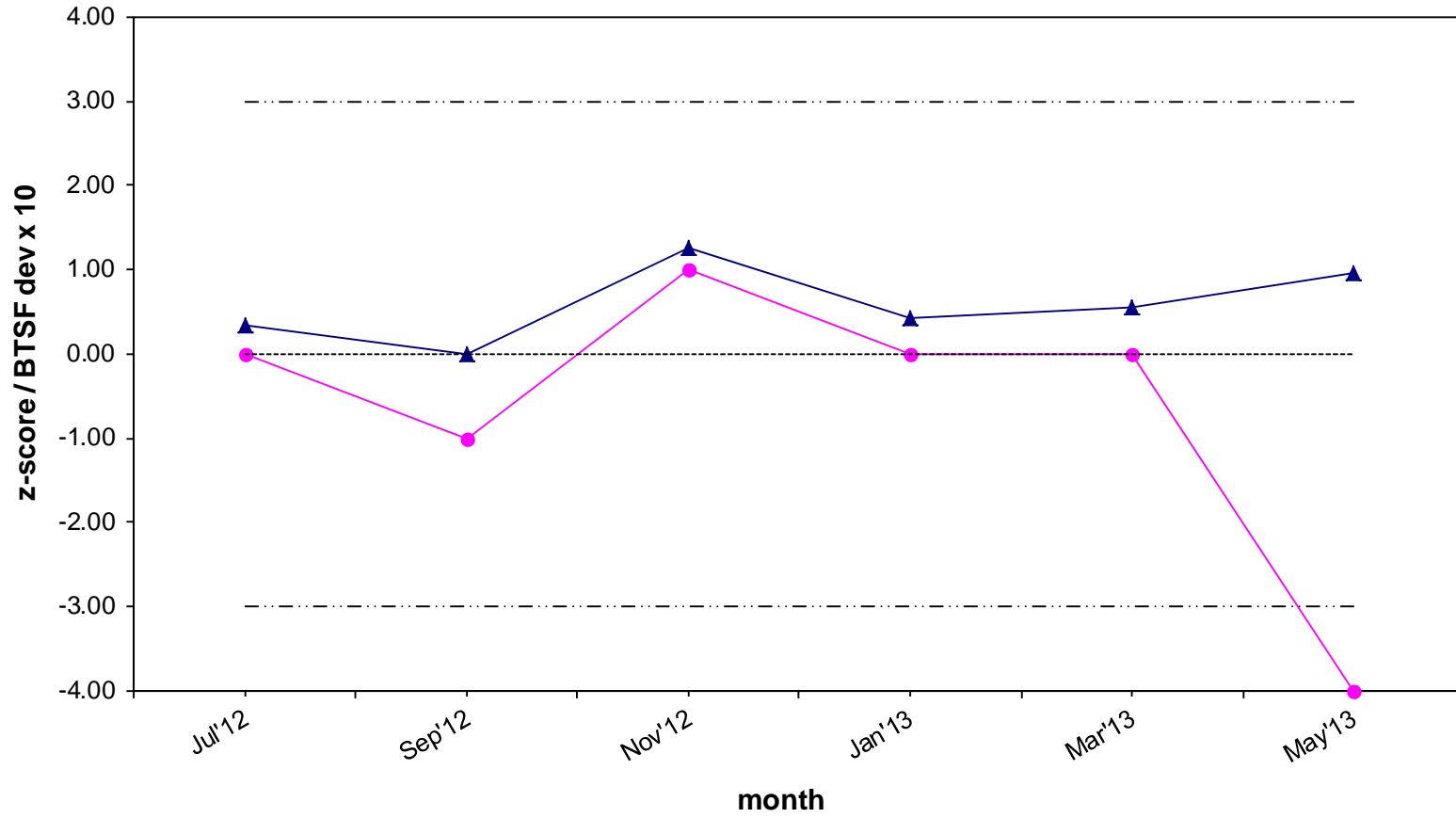
A3.4

### AVGAS - BP Refinery - Kwinana Engine No. 2



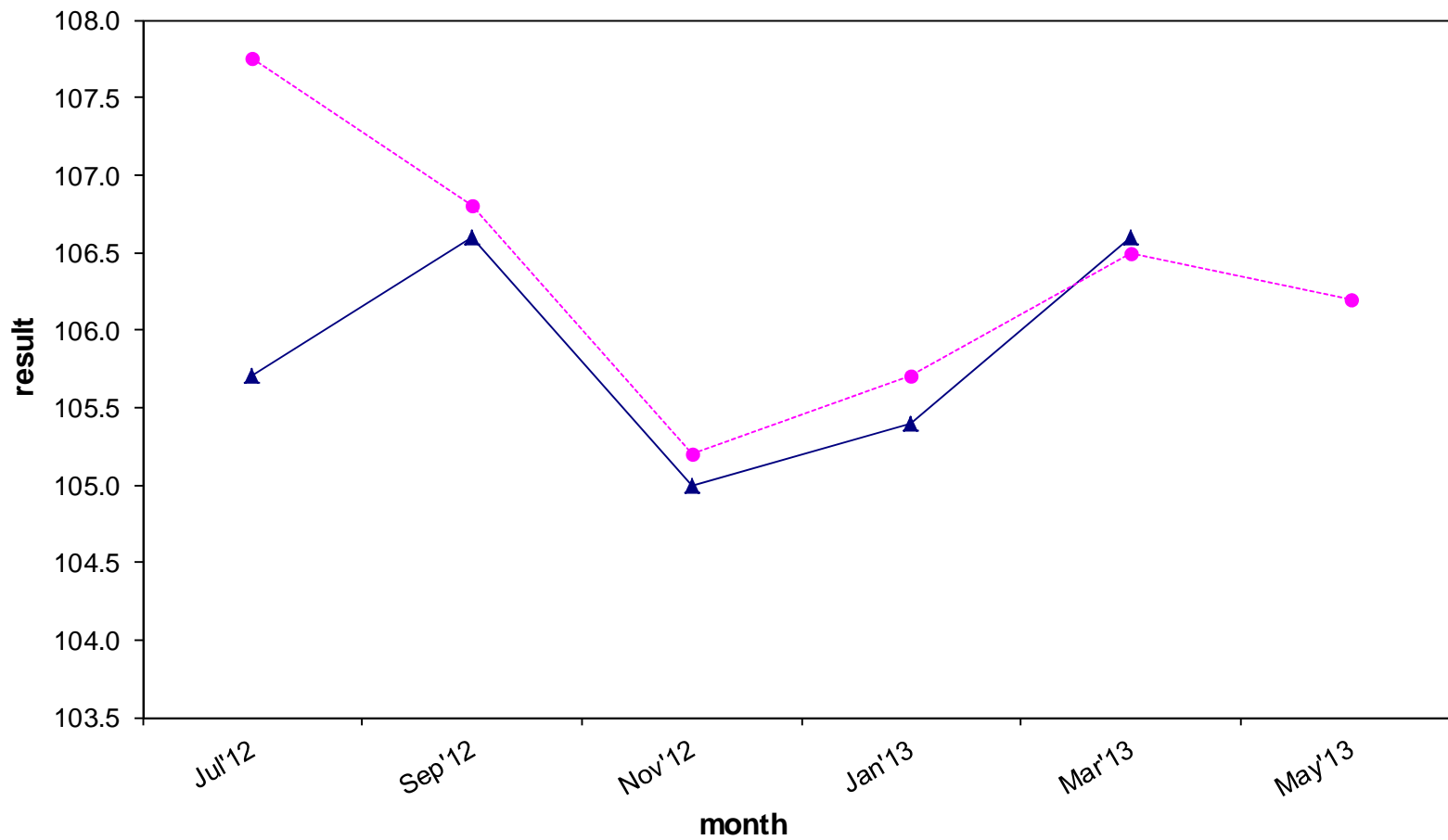
A3.5

### AVGAS - BP Refinery - Kwinana Engine No. 2



A3.6

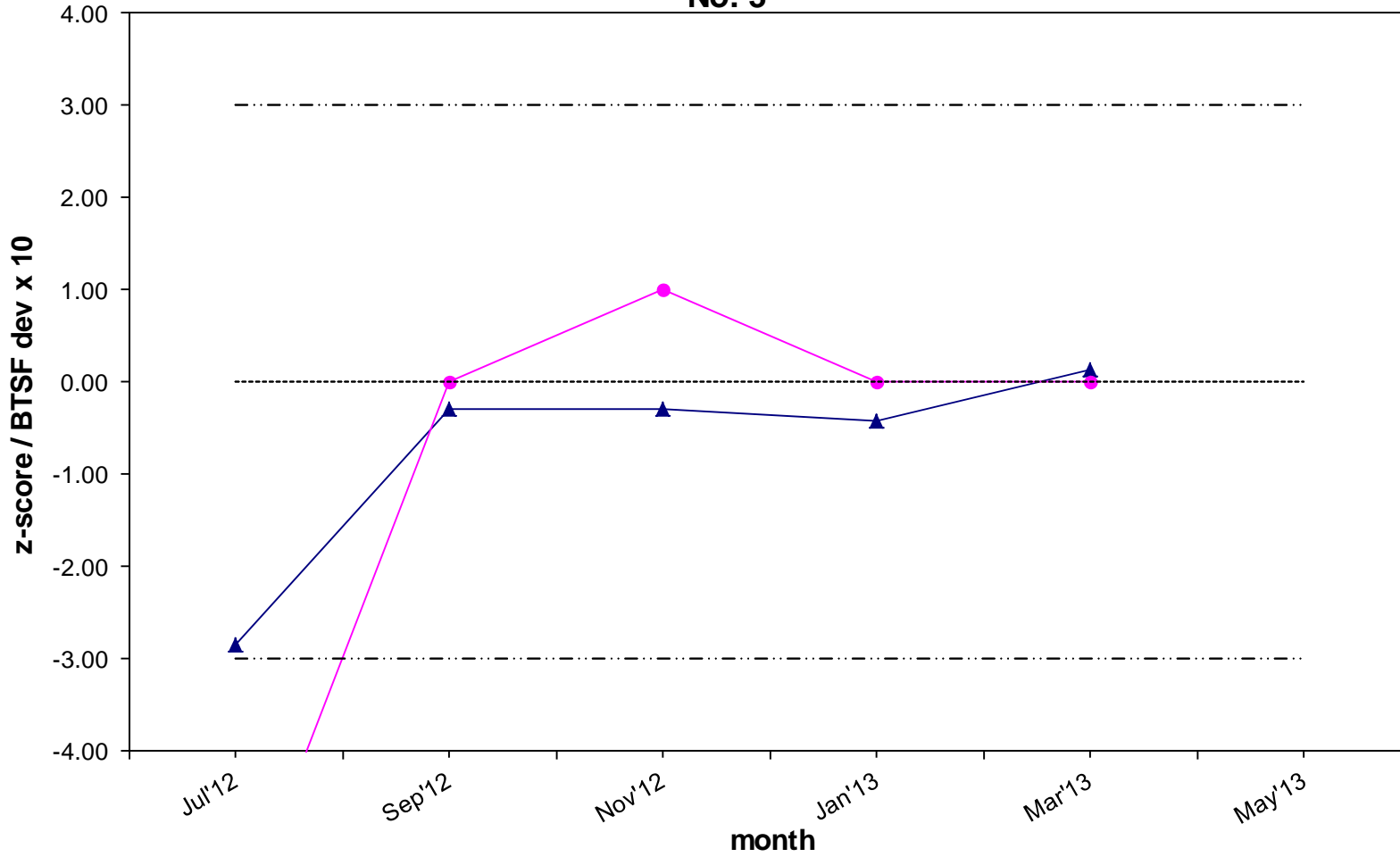
AVGAS - Independent Petroleum Laboratory Whangarei - (NZ) Engine No. 3



A3.7

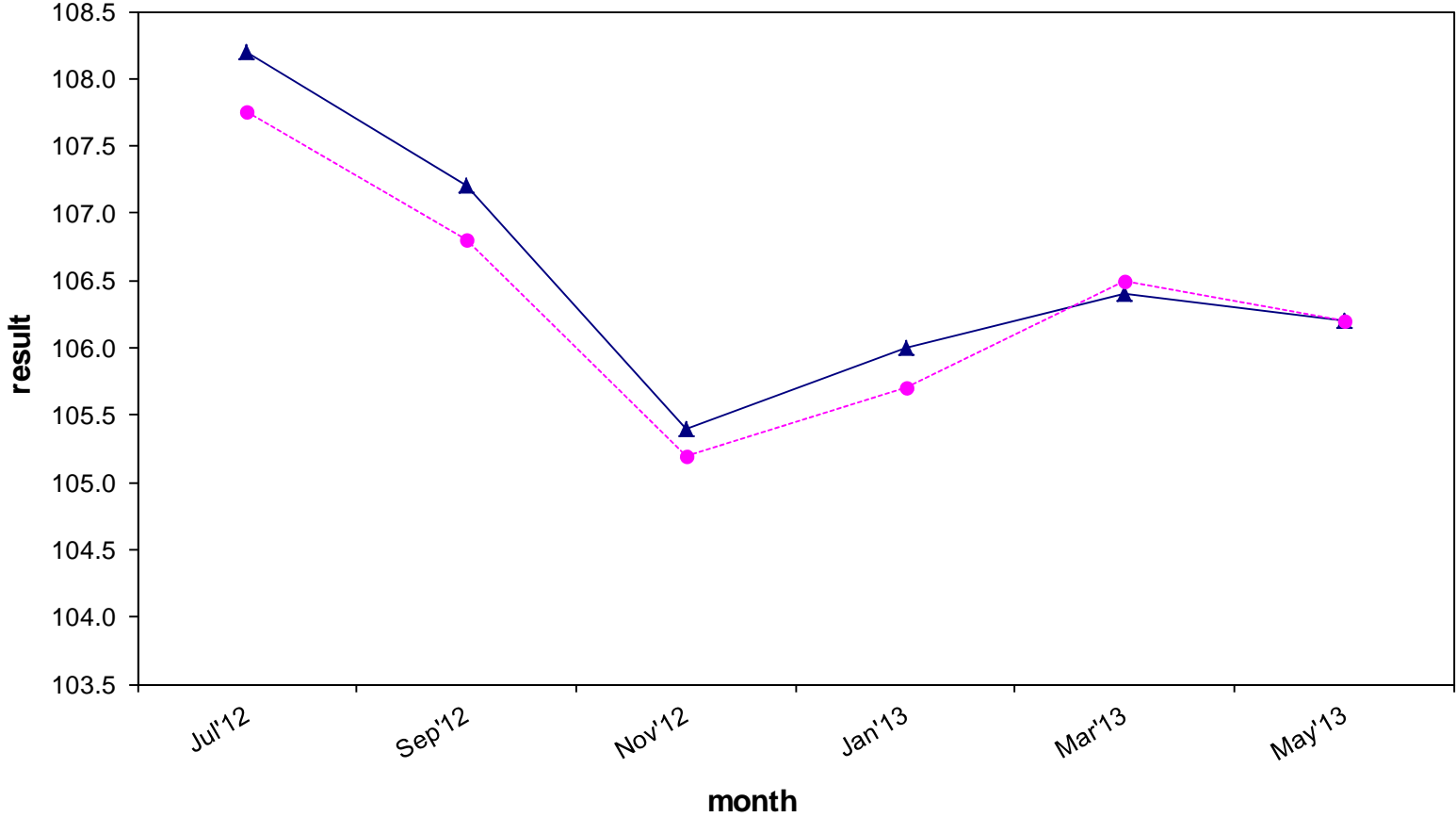


### AVGAS - Independent Petroleum Laboratory Whangarei - (NZ) Engine No. 3



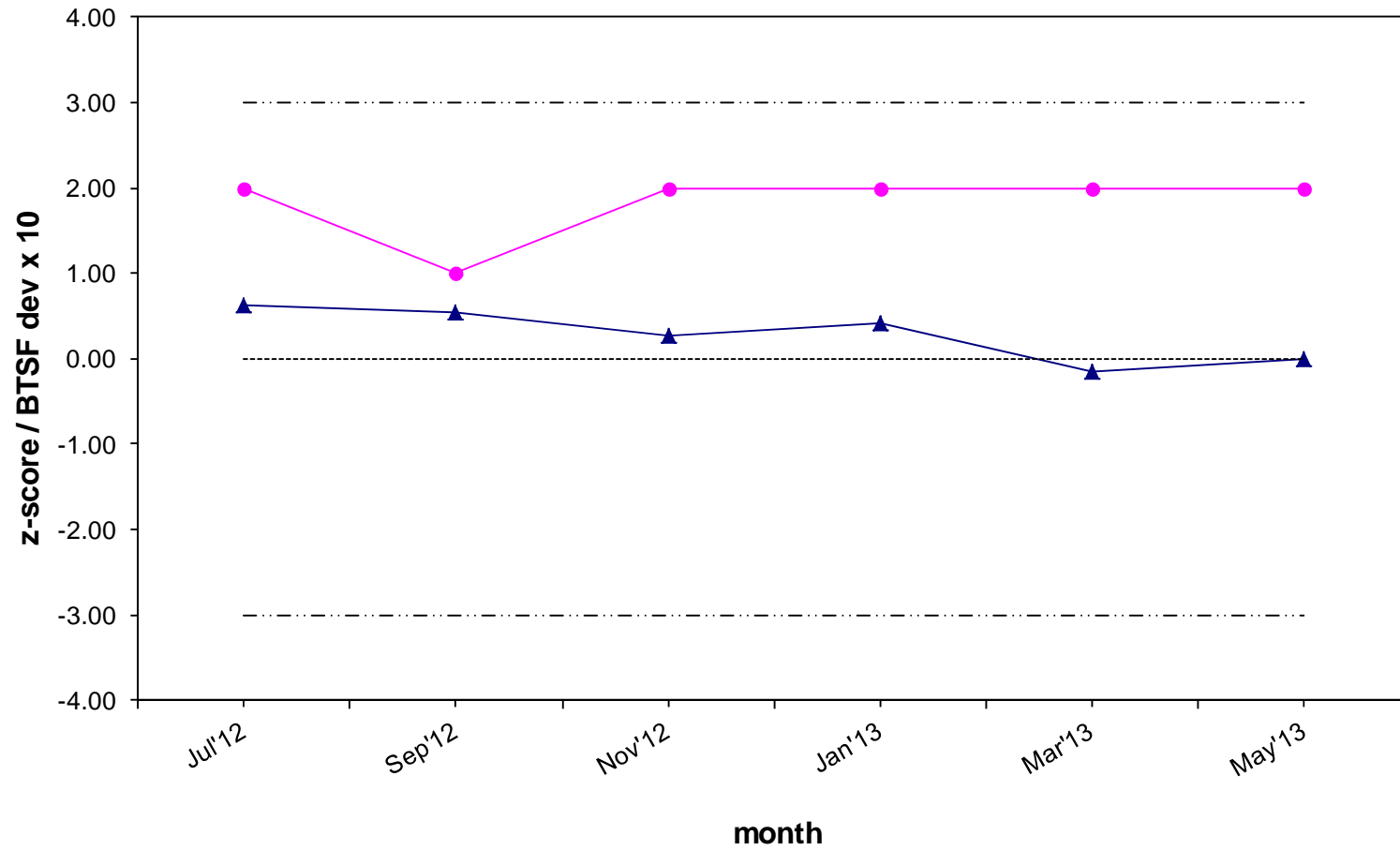
A3.8

### AVGAS - Intertek Testing Services (NSW) - Clyde



A3.9

### AVGAS - Intertek Testing Services (NSW) - Clyde



A3.10